

# SRI CLOUD ENERGY

Over  
Research & Development  
Center Opening  
Shortly In

**USA**



Sousri Technologies  
Private Limited

Revolution in the Field of Technology  
Technological Singularity!



Whenever an action takes place either through us or any other actions in the Nature, Energy is used and the used energy changes its form while getting back to the Nature, as energy can neither be created nor destroyed

This can be called '**Sri Cloud Energy**' with which we are surrounded.

The chip we invented receives that cloud energy and converts it into electricity.

The Chip can be attached to any existing machine or device that works on Electricity. All the data related to such devices is stored in a router.

The chip and the device can be controlled by a Remote Controller made for that purpose. So, in all a chip, a router and a remote controller are what we need to trap the cloud energy freely available in the Nature.

**For More Info**

**Chat on WhatsUp**

**+91 903 055 6936**

**+91 912 130 6936**





**We are Sousri Technologies engaged in developing chip attachments to the existing electrical and electronic devices to draw Electricity from the atmosphere.**

**1**

We produce chips that convert the energy in the atmosphere into Electricity and supplies to the attached machines or equipment to run.

**2**

Enabling everyone including those live in remote areas too, use Electricity through our devices.

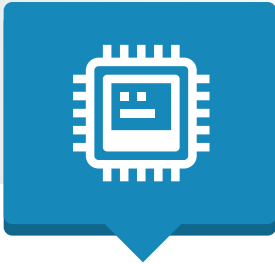
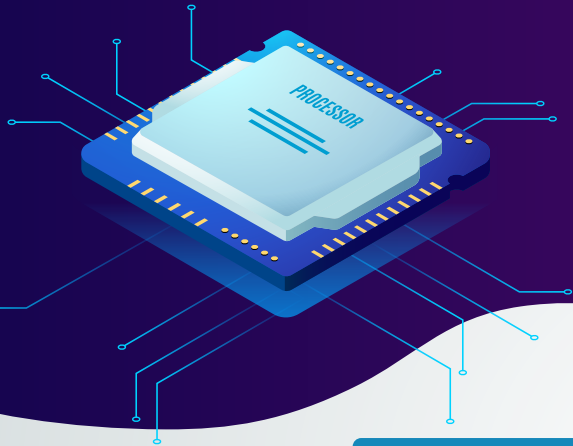
**3**

Which means even phones, vehicles and electronic gadgets do not need a battery support.

**WE IMPLEMENT**

**WHAT WE CONCEIVE**

# ABOUT THE PRODUCT



Chips are designed in three phases

## Phase 1

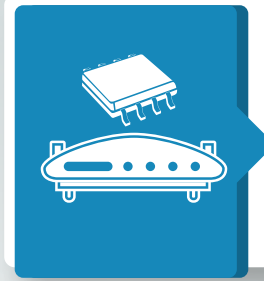
For personal  
and domestic  
use

## Phase 2

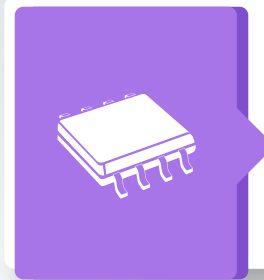
For  
Commercial  
use

## Phase 3

For  
Industrial  
use



We make power chips and power routers.  
*(Remote already available in the market)*



The power chip converts the Higgsboson absorbed from the atmosphere into electricity and supplies it to the devices.



Chips have plugs and USB type connectors, to enable our customers use the power at their place



The above products of ours are easy to install and use by connecting to your devices.

# HOW DOES THE PRODUCT WORK?



Global application as atmosphere is available everywhere on the globe



The Chip traps Energy from the atmosphere and converts into Electricity



The Electricity thus generated will pass through a router



The Router passes the power to the Machine or equipment or device it is attached



End user's machine uses that power to run

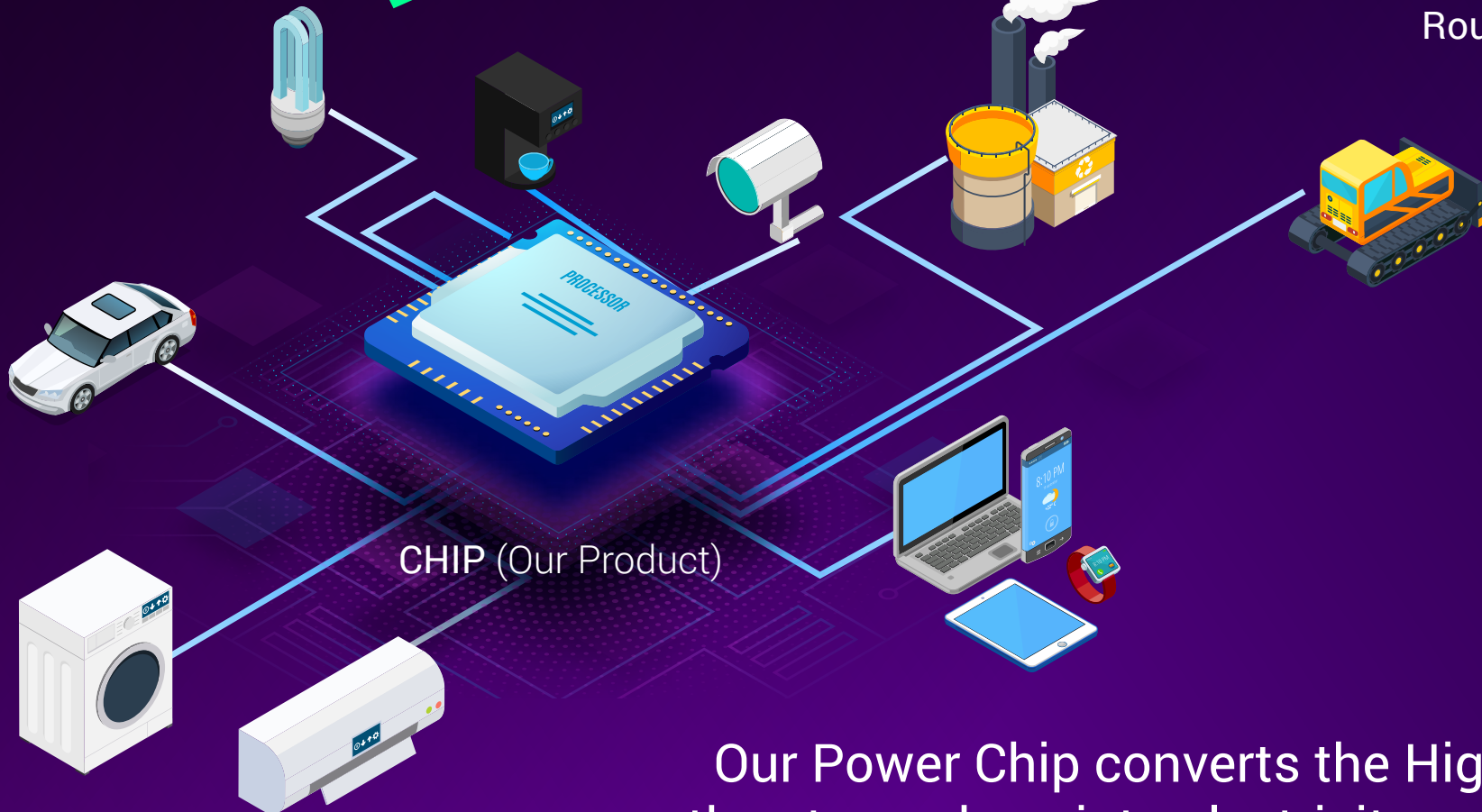


# APPLICATION OF THE PRODUCT

Power supplied to various  
machines, vehicles,  
devices and equipment



Router (Our Product)



CHIP (Our Product)

Our Power Chip converts the Higgsboson in  
the atmosphere into electricity and supplies it  
to the router connected to end devices.

# WHY THIS PRODUCT?



# BENEFITS TO CUSTOMERS



Free of cost Power.

Power available at anyplace without any hassles.

One time chip and router costs are affordable. Less than a mobile phone.

No clumsy wires, transformers and plug points.

Easy to install and operate.

The product is useful to everyone.

Power is available even on the move.

Continuous Power without cuts.

Recharging devices can be avoided

Not hazardous like conventional power connection.



# TIME PLAN



Reach the target of supplying the Chip and the Router to 10 million customers.



Product Development



Land acquisition and Infrastructure development



Marketing and expansion



## PATENT TITLE

A SYSTEM TO RECEIVE HIGGS BOSONS PRESENT IN THE FORM OF ENERGY IN THE ATMOSPHERE AND GENERATE ELECTRICAL ENERGY



INDIA PATENT NUMBER

**398776**

INTERNATIONAL PATENT APPLICATION NO

**PCT/IN2020/050568**

DATE OF GRANT

**08-06-2022**

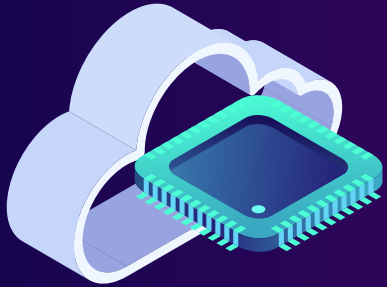
STATUS

**PRE-COMMERCIAL**

## SELECTION OF THE TECHNOLOGY CATEGORY

- ✓ CLOUD ENERGY OR AUTOMOTIVE
- ✓ MOBILITY INDUSTRIAL MANUFACTURING INTERNET OF THINGS (IT)
- ✓ SMART HOME LED LIGHTING
- ✓ OPTO ELECTRONICS OR SEMICONDUCTOR MANUFACTURING
- ✓ EQUIPMENT WIRELESS
- ✓ TELECOMMUNICATION

# GREAT JOURNEY OF SCIENCE



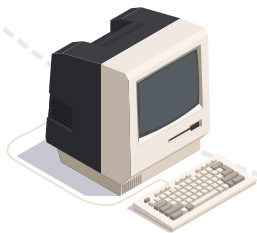
Now in 2022 Power Chip from Sousri



Internet 1983



Cell Phone 1976



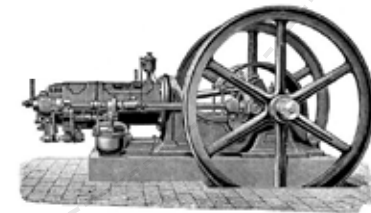
Computer earlier part of 19th Century



Electric Lamp 1879



Telephone 1876



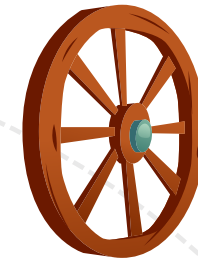
Combustion Machine 1860



Printing Machine 1439



Compass 2nd Century BC.



Wheel 3500 BC.



Fire Invented about 420 million years ago.

Science has taken a long trip since man wanted to rise above other species on the earth. During the journey, science has passed through many twists and turns to reach the present state and the journey goes on till the end of the universe or extinction of mankind. The rate of development of science is also increasing decade after decade. Few of those turning points science has taken in the course due to the innovations of great scientists are..

# Sousri Technologies Private Limited

Register Office:

H.No.2-28/2/A4, Dharoor Post,  
Jagityal, Karimnagar,  
Telangana, India-505455.



FOR PROJECT  
CONTACT

**+91 912 130 6936**

sricloudenergy@gmail.com



FOR BUSINESS  
CONTACT

**+91 903 055 6936**

sousritechnologies@gmail.com